

# Optimise your global performance





"We provide clients with the advice and support required to tackle compliance and improve performance."







# Optimise your global performance

World economy. Commodity price volatility. Rising costs. Increased regulation and changing government policies. There are numerous opportunities and challenges for mining companies – how they are tackled will determine future success.

We know this because we are there, helping our clients meet – and profit from – the challenges they face.

With the Moore Stephens International network comprising over 600 offices in more than 100 countries, we are able to provide multi-jurisdiction assurance and advisory services with sector and technical experts based in all key mining regions. Close working with our London office ensures a smooth, one-stop service for all our mining clients, providing access to one of the world's major capital markets.

We provide the advice and support required to tackle compliance and improve performance. Our team responds quickly to client needs, offers the full range of assurance and advisory services, and all at a reasonable cost. As a Top 10 firm of accountants specialising in the mining sector, Moore Stephens provides a real alternative to the larger firms.

## Helping meet your challenges

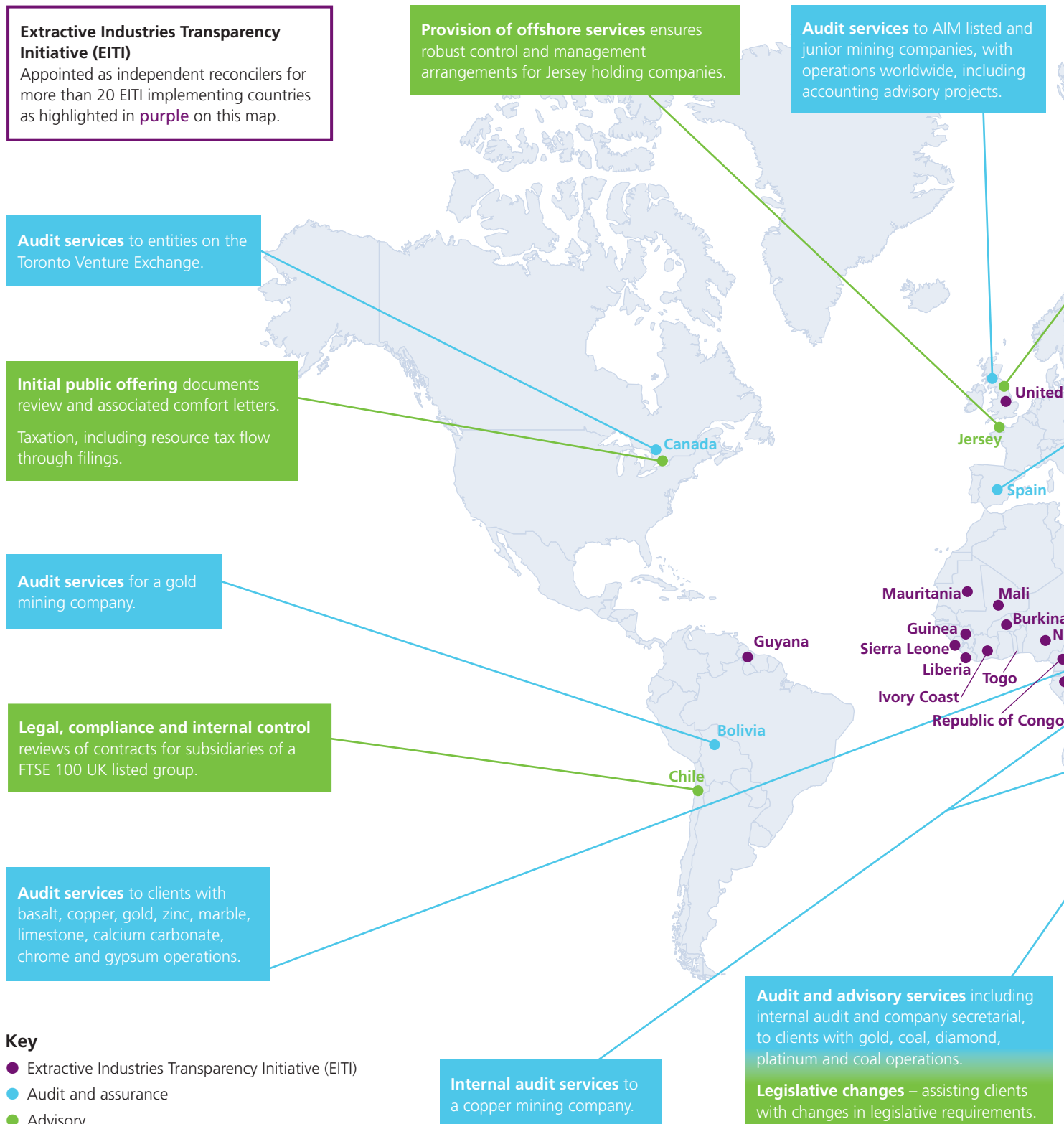
Our hands-on approach means we gain an in-depth understanding of the complex issues you face, leveraging our knowledge of similar businesses to help you optimise performance and meet your objectives.

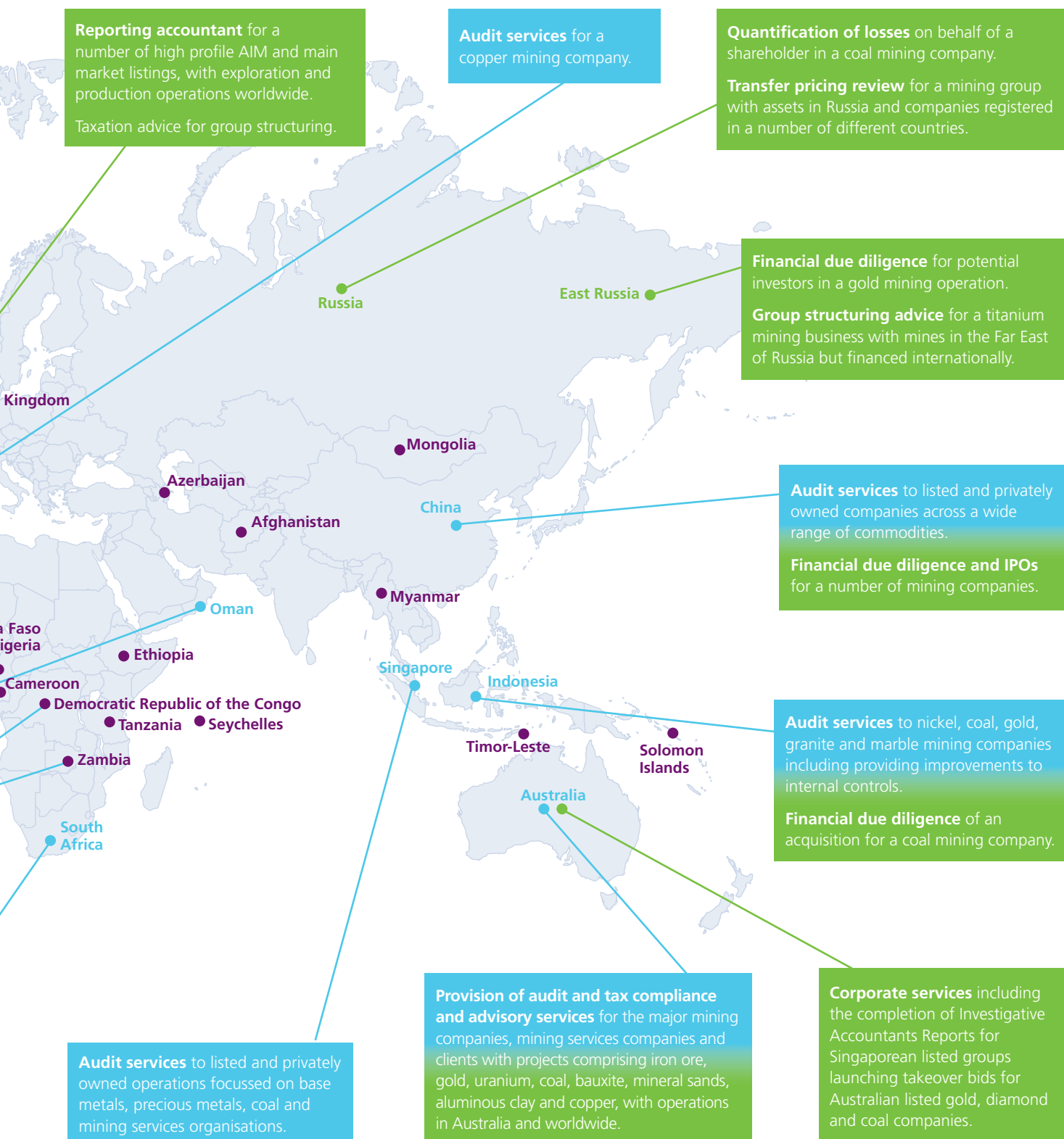
We help clients meet the challenges they face every day, including:

- improving profitability and efficiency;
- assessing and managing business, financial and geopolitical risks;
- raising finance and accessing public markets;
- responding to change and uncertainty;
- strengthening corporate governance procedures;
- complying with the increasing regulation and reporting requirements;
- ensuring the most tax-efficient and effective corporate structure;
- dealing with the issues of operating globally;
- recruiting, retaining and motivating a skilled workforce; and
- ensuring IT systems meet the needs of the business.

# International reach

This map shows examples of mining expertise from the Moore Stephens International network







# Our services



Our services to the sector reflect the dynamism and complexity of our global mining clients.

## Corporate finance

Our Corporate Finance team has built a reputation for providing a tailored service that meets our clients' specific requirements, whilst recognising the importance of our clients not losing autonomy or control of a project. Our experience includes advising clients on the structuring and funding of ventures, raising finance, mergers, acquisitions and disposals including identifying acquisition targets or purchasers, due diligence investigations, advising on IPOs and bond issues, valuations, assisting with negotiations and dispute and litigation support.

## Transaction support

Moore Stephens has substantial experience in acting as Reporting Accountants on flotations. The London team has acted on many high profile initial or secondary public offerings and class circulars for fully listed or AIM clients, including a significant number in the mining sector. Collaborating globally, we have substantial experience on worldwide exchanges.

## Services to private equity

We can offer a valuable independent layer of advice, providing sector expertise, operational reviews, risk management and financial modelling.

## Corporate audit

The very nature of the audit process means we gain a detailed knowledge and understanding of businesses at numerous levels and, as such, we are able to quickly identify risks as well as any areas for potential improvement. The team can also advise on the numerous changes to rules and regulations regarding UK, US accounting standards and IFRS.

Of particular relevance is the impact of IFRS 15 'Revenue from contracts with customers' and the impact of the proposed new 'leasing' standard.

## Business tax

The scope of our services to clients with international operations extends beyond the delivery of compliance services to advising on international business structures and tax issues to optimise their position in cross-border transactions. We are also able to advise on international and local tax implications, both in response to, and in anticipation of, changes in tax environments and to their own particular needs.

We also offer the full range of personal and expatriate taxation services.



### VAT

We advise clients with international corporate structures how best to structure their arrangements to ensure optimum VAT recoveries. Historically, HMRC in the UK has challenged the recovery of VAT by companies in this sector, and we can assist in making sure that arrangements are structured robustly, with practical and pragmatic solutions.

### Governance, risk & assurance

The management of risk and implementation of robust corporate governance is an increasingly important aspect of global business. Our team is able to ensure that your risk management and governance strategies are not a quick fix to compliance but something that provides value, empowering your business to achieve its goals.

### Forensic accounting

Our team is a highly specialised unit with extensive experience in dealing with disputes analysis and investigations. We work closely with clients and their lawyers to present the best case possible, expedite the legal process and provide meaningful commercial solutions. Experts in areas including computer risk management, actuarial assessments, corporate finance and UK and overseas taxation support the core team.

We regularly advise clients on commercial and contractual disputes and mediation involving business or share valuations; expert witness and quantification of loss; forensic investigations, particularly in relation to fraud claims, tax investigations and asset tracing and legal disputes involving family and private wealth.

### IT consultancy

In today's environment, businesses increasingly depend on effective IT systems, but the risks of failure can be high. The challenge is to harness the power of IT whilst avoiding the risks, we can ensure your IT systems work efficiently and effectively in supporting your business in meeting its objectives, both now and in the future.

Our team of specialists can provide a range of services to meet your objectives, including risk reviews, business continuity planning, assurance on the accurate processing and reporting of data and planning and implementation of IT projects.

### Cyber security

We can help you be confident that:

- your data is secure, reliable, accurate, appropriate, complete and available when needed to enable effective business decisions; and
- IT application systems are well secured, and are performing as required in implementing business rules.

### Outsourcing

Our experienced professionals deliver outsourcing services across a range of disciplines, so you can be assured that whatever your requirements, we can meet them in full. Our services include:

- financial accounting and administration, remotely or on-site;
- operation of bank accounts and cash management;
- management reporting and budgeting;
- procurement and facilities management; and
- providing short-term solutions to staffing requirements.

“Our objective is to be viewed by our clients as the first point of contact for all of their financial, advisory and compliance needs.”

## About Moore Stephens

We help you thrive in a changing world.

We provide all the support and guidance you need to deal with new risks and opportunities. We ensure easy access to the right people, so decisions can be made quickly and confidently. A consistent team will partner with you to support your aspirations and contribute to your success.

You'll have access to a range of core services, including audit, accounting, tax, risk and systems assurance, corporate finance, restructuring and insolvency, wealth management and disputes analysis. We support a broad range of individuals and entrepreneurs, large organisations and complex international businesses.

If your business and personal interactions need to expand, we'll help make it happen – coordinating advice from a network of offices in more than 100 countries.

## Moore Stephens globally

Moore Stephens International is the 11<sup>th</sup> largest global accountancy and consulting network, headquartered in London. With fees of over US\$2.9 billion and offices in 112 countries, clients have access to the resources and capabilities to meet their global needs.

By combining local expertise and experience with the breadth of our worldwide networks clients can be confident that, whatever their requirement, Moore Stephens provides the right solution to their local, national and international needs.

## Contact information

If you would like further information on any item within this brochure, or information on our services please contact:

**David Tomasi** – Managing Partner  
Global Head of Energy,  
Mining & Renewables Sector  
Australia

[dtomasi@moorestephens.com.au](mailto:dtomasi@moorestephens.com.au)

**Margie Alt** – Director  
South Africa  
[margiea@za-ms.co.za](mailto:margiea@za-ms.co.za)

**Olivier Barbeau** – Managing Partner  
South Africa  
[oab@jhb.moorestephens.co.za](mailto:oab@jhb.moorestephens.co.za)

**Jeff Blackbeard** – Strategy Advisor  
South Africa  
[jeff@msdbn.co.za](mailto:jeff@msdbn.co.za)

**Gareth Magee** – Partner  
UK  
[gareth.magee@scott-moncrieff.com](mailto:gareth.magee@scott-moncrieff.com)

**Hamadoun Maiga** – Partner  
Mali  
[hamadoun.maiga@pyramis-ac.com](mailto:hamadoun.maiga@pyramis-ac.com)

**Baye Ndiaye** – Partner  
Senegal  
[bndiaye@bmcaudit.cn](mailto:bndiaye@bmcaudit.cn)

**Shepherd Nhondova** – Partner  
Zimbabwe  
[shepherd@pna.co.zw](mailto:shepherd@pna.co.zw)

**Robert N'Ken** – Partner  
Central Africa (CEMAC)  
[rnken@dbn.moorestephens.co.za](mailto:rnken@dbn.moorestephens.co.za)

**Leonard Roberts** – Managing Director  
South Africa  
[leonardr@msjhb-er.co.za](mailto:leonardr@msjhb-er.co.za)

**Godfrey Temba** – Partner  
Tanzania  
[godfrey.temba@pmcg.co.tz](mailto:godfrey.temba@pmcg.co.tz)

**Sami Zaitoon** – Managing Partner  
Qatar  
[sami.zaitoon@moorestephens-qa.com](mailto:sami.zaitoon@moorestephens-qa.com)

## MOORE STEPHENS

We believe the information contained herein to be correct at the time of going to press, but we cannot accept any responsibility for any loss occasioned to any person as a result of action or refraining from action as a result of any item herein. Printed and published by © Moore Stephens International Limited. Moore Stephens International Limited, a company incorporated in accordance with the laws of England, provides no audit or other professional services to clients. Such services are provided solely by member and correspondent firms of Moore Stephens International Limited in their respective geographic areas. Moore Stephens International Limited and its member firms are legally distinct and separate entities. They are not and nothing shall be construed to place these entities in the relationship of parents, subsidiaries, partners, joint ventures or agents. No member firm of Moore Stephens International Limited has any authority (actual, apparent, implied or otherwise) to obligate or bind Moore Stephens International Limited or any other Moore Stephens International Limited member or correspondent firm in any manner whatsoever. DPS27437 January 2019